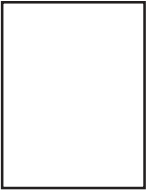


Turn to the LTC 1C for:

- Technical support on network, operating system, migration and system-design issues
- Data collection and analysis to identify future technology needs
- Training on an array of network and operating-support issues, as well as on hardware and software applications
- E-mail and Web hosting for schools and districts
- E-Rate application assistance through ISBE
- Hosted listservs for various special interest groups
- State Technology Plan training to guide districts through the plan development and response to the peer review process
- Partnering with the ISBE and local districts in preparing to meet the NCLB 8th Grade Technology Proficiency Requirement
- Partnership with ISCs in offering technology-integrated subject matter training
- Tech-related professional development opportunities that address identified statewide initiatives and local needs in partnership with ROEs and ISCs
- Providing hosted Moodle server capabilities to facilitate the development and support of learning opportunities within and among suburban Cook County districts
- Exploration of new services, such as documenting Board e-mails for districts



Learning Technology Center 1 Central

928 Bankersdale Rd
 XXXXXXXX
 1st Floor, IL 60526
 XXXXXXXX



2701 W. Washington Blvd.
 Bellwood, IL 60104

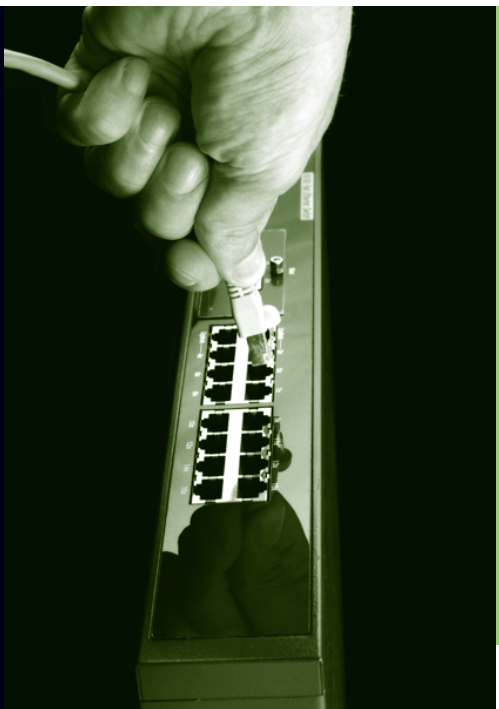
Qualified technology support for suburban Cook County schools and districts.

See inside for detailed information.



Advancing learning through technology:

Certified technical assistance for suburban Cook County schools and districts.



Learning Technology Center 1 Central



Technology help is right at hand.

As the technology needs of educators and administrators increase, the demands on your time and expertise just keep climbing. And as busy as you are today, you'll be even busier tomorrow.

Where do you turn when you need help troubleshooting a network problem or developing a solution? Who can you call for the kind of professional, dependable assistance that can keep you ahead of the curve?



The Learning Technology Center 1 Central.

You call 1-708-354-4539, or visit www.LTC1c.k12.il.us for certified network support services that help you deliver maximum network performance.

The Learning Technology Center program was established by the Illinois State Board of Education in 1995. The statewide LTC network is charged with helping districts design, implement and assess technology needs.

The Area One Central LTC serves suburban Cook County schools and districts. The LTC 1C works closely with the Intermediate Services Centers and the Regional Office of Education to provide support for technology planning and training, as well as a host of other technology applications.

We're here to support you.

Through the LTC 1C, technology directors and coordinators can access first-level network support services at no fee (covered by a state grant to the LTC). Additional services are available at very favorable cost-recovery rates.

For more information, visit the LTC website: www.LTC1c.k12.il.us

Learning Technology Center 1 Central Network Support Services

General Network Services

Tier 1 services are provided at no cost

These services are provided via the LTC grant funding. They extend to troubleshooting assistance on desktops, servers, infrastructure (including connected/related equipment) and LAN issues. Districts are allowed up to four hours of hands-on and remote support per month. Services include all LAN / WAN (switches, T1, frame-relay, ISDN, DSL, etc.) and the Microsoft Windows Server platform.

Tier 2 services are provided via cost-recovery at \$95/hour

These services extend to troubleshooting assistance on desktops, servers, infrastructure (including connected/related equipment) and LAN issues beyond the four-hour time limit of Tier 1. Services include all LAN / WAN (switches, T1, frame-relay, ISDN, DSL, etc.) and the Microsoft Windows Server platform.

Network Analysis – Fluke

Cost: \$250/year

Onsite review of a site LAN (single broadcast domain) for current network utilization and provide guidance for traffic optimization (limited to eight hours of analysis).

Security Audits

Cost: \$250/year

This test scans the list of IP addresses provided by the district and scans for all applications that can be seen from the Internet to check the setup & security of the firewall. Then a thorough test is performed on all applications that are found. Next, the audit turns to the internal side, with a general scan for vulnerabilities. A final report is prepared, along with suggestion for resolution to any issues discovered.

Moodle Server

One-time setup fee for one Moodle server site: \$400

(Free 60-day trial site available)

Your site will run on the LTC Server equipment. LTC will set up a site for your district. A district-appointed administrator and the LTC administrator will have access to your site. Nightly backups will be performed on your site.

Staff E-Mail Services

Free to LTC 1C districts

The LTC will work with your district to set up an email address for any and all district personnel. The districts will designate an email administrator. The software program used will verify email sources and reduce spam. The transfer of old files, contacts, etc., can be accommodated for a modest additional fee. This service features the capability of creating list serves.

District Web Hosting

Free to LTC 1C districts

Free website setup (with your domain name), plus assistance in coordinating k12 or other domain names with ICN to ensure district control of Domain Name Server (DNS).



To get the technology support and assistance you need, call 1-708-354-4539 or visit www.LTC1c.k12.il.us today.

630-281-5821